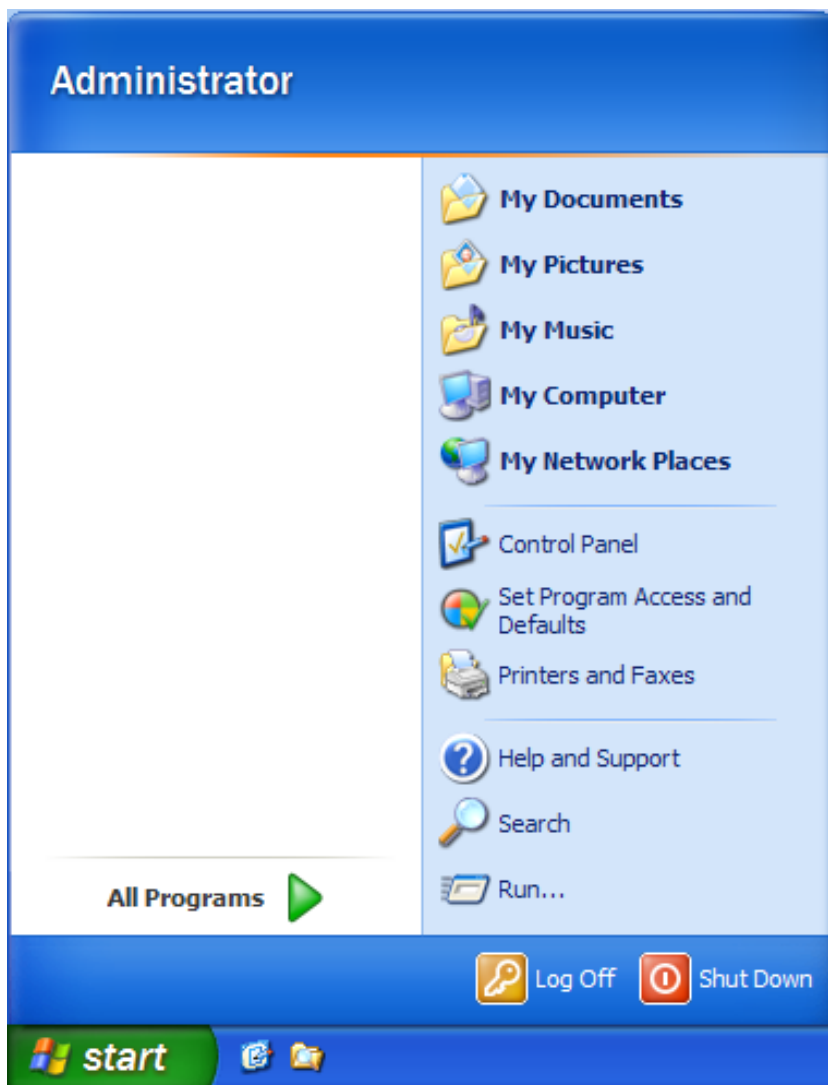
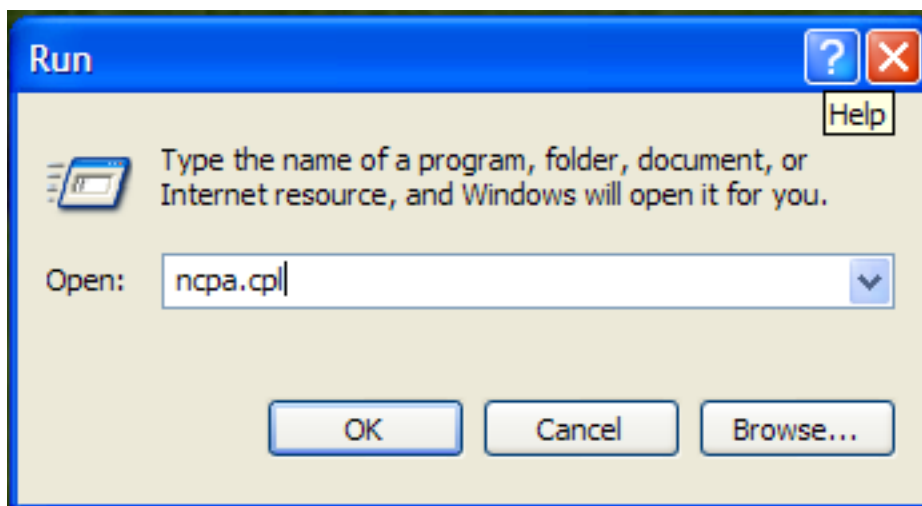


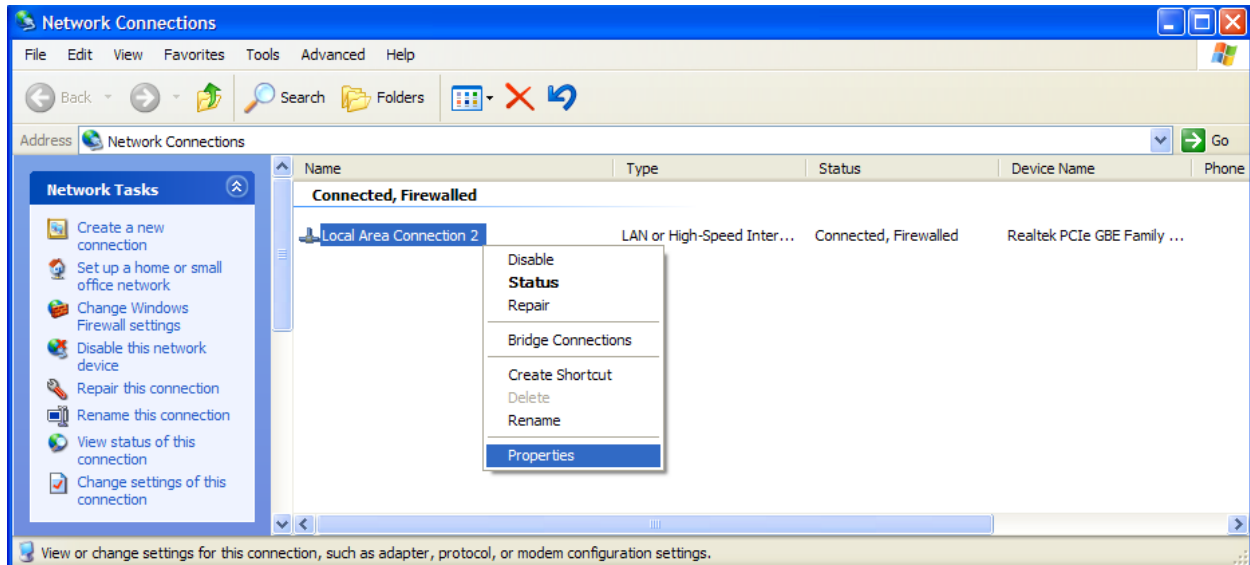
1. Click on START and select **Run**



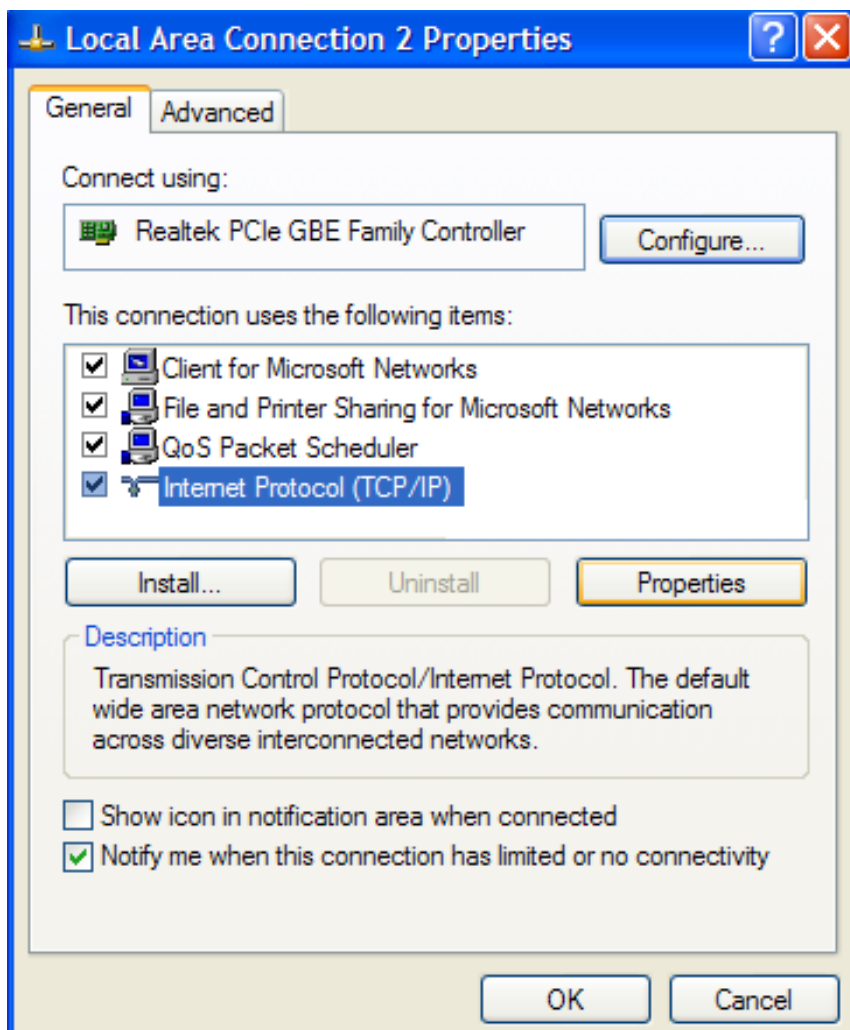
2. Type **ncpa.cpl** in run box and click ok



3. Right click over Local Area Connection and select **Properties** from the drop down menu



4. Select **Internet Protocol (TCP/IP)** and click on **Properties**



5. Select **Use the follow IP address radio** button and fill out information

The image shows a screenshot of the "Internet Protocol (TCP/IP) Properties" dialog box, specifically the "General" tab. The window title bar is blue with a question mark icon and a close button. The "General" tab is selected, and the text inside reads: "You can get IP settings assigned automatically if your network supports this capability. Otherwise, you need to ask your network administrator for the appropriate IP settings." There are two radio button options: "Obtain an IP address automatically" (unselected) and "Use the following IP address:" (selected). Below the selected option are three input fields: "IP address:" (empty), "Subnet mask:" (empty), and "Default gateway:" (empty). There are also two radio button options for DNS: "Obtain DNS server address automatically" (unselected) and "Use the following DNS server addresses:" (selected). Below the selected option are two input fields: "Preferred DNS server:" (containing "207 . 229 . 52 . 2") and "Alternate DNS server:" (containing "205 . 233 . 109 . 40"). At the bottom right of the dialog is an "Advanced..." button. At the very bottom of the window are "OK" and "Cancel" buttons.

6. Click **OK** at the bottom and then **OK** again on previous window